

GZFI8176.1
ROTARY TORSO
02/07 SMITHFIELD
COMPANY 14

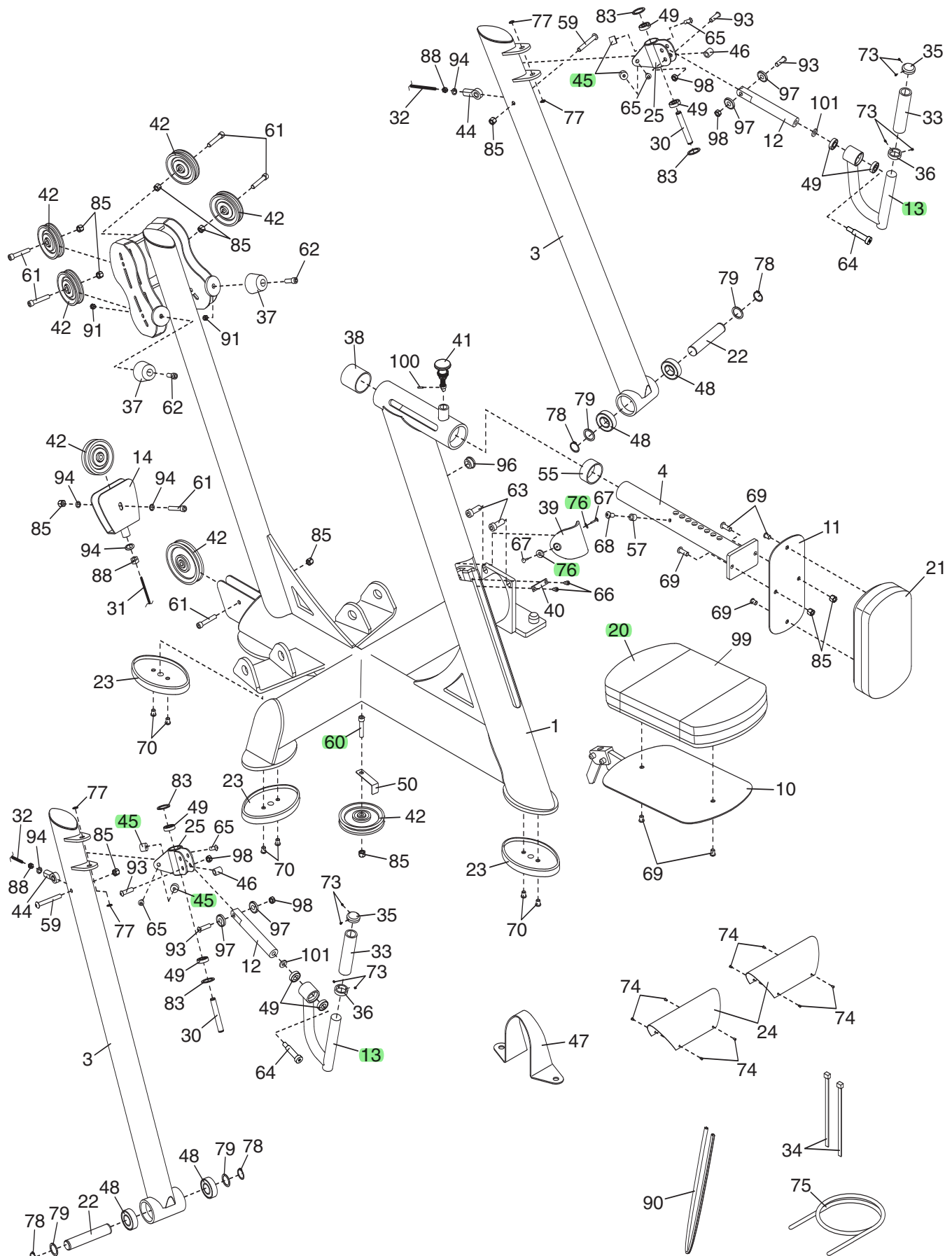
<u>Key</u>	<u>Part Number</u>	<u>Description</u>	<u>Qty.</u>
1	GZ5602	FRAME	1
2	GZ5611	TOWER	1
3	GZ5607	ARM	2
4	GZ2341	CHEST PAD TUBE	1
5	GZ3248-10	GUIDE ROD	2
6	GZ5534	WEIGHT ROD	1
7	GZ4392	TOP WEIGHT	1
8	GZ30598	10-LB WEIGHT	14
9	GZ30299	20-LB WEIGHT	5
10	GZ4279	SEAT FRAME	1
11	GZ30960	CHEST PAD FRAME	1
12	GZ30957	HANDLE TUBE	2
13	GZ5608	HANDLE	2
14	GZ4186	U BRACKET	1
15	GZ1751	ACCESS PANEL GASKET	1
16	GZ30828	ACCESS PANEL	1
17	GZ3516	TOWER COVER	1
18	GZ3453	TOWER CAP	1
19	GZ1504	TOWER TRIM	2
20	GZ5108-11	SEAT	1
21	GZ5108-64	CHEST PAD	1
22	GZ1578	ARM AXLE	2
23	GZ1486	FRAME FOOT	3
24	GZ9433	WEAR COVER	2
25	GZ5609	HANDLE BRACKET	2
26	GZ1566	LONG PLATE FRAME	1
27	GZ30348	LONG TOWER PLATE	1
28	GZ1567	SHORT PLATE FRAME	1
29	GZ30347	SHORT TOWER PLATE	1
30	GZ1818	HANDLE AXLE	2
31	GZ5020-48	LONG CABLE	1
32	GZ5020-47	SHORT CABLE	1
33	GZ1730	HANDGRIP	2
34	GZ1081	BUNGEE TIE	2
35	GZ1757	HANDLE CAP	2
36	GZ1758	HANDLE COLLAR	2
37	GZ1111	ARM BUMPER	2
38	GZ1510	LONG BRACKET BUSHING	1
39	GZ1816	FRAME COVER	1
40	GZ30795	STOP PLATE	1
41	GZ1980	ADJUSTMENT KNOB	1
42	GZ1003-08	PULLEY	9
43	194353	SMALL PLUG	2
44	GZ1063	CABLE END	2
45	GZ1100	HANDLE BRACKET BUMPER	4
46	GZ1812	RUBBER STOP	2
47	GZ30218	ANCHOR STRAP	1
48	GZ1011-01	1" BUSHING	4
49	GZ1011-02	1/2" BUSHING	8
50	GZ3102	CABLE TRAP	3
51	GZ1500	WEIGHT PIN	1
52	GZ1678	WEIGHT BUMPER	2
53	GZ1391-01	WEIGHT INSERT	39
54	GZ1020	GUIDE BUSHING	2
55	GZ1509	SHORT BRACKET BUSHING	1
56	GZ1517	TOWER FOOT	4

57	GZ1511	5/8" BUSHING	1
58	GZ1353	CABLE COVER	1
59	GZ1832	3/8" X 2 3/4" BUTTON BOLT	2
60	GZ1013-04	3/8" X 2" BOLT	3
61	GZ1013-02	3/8" X 1 3/4" BOLT	6
62	GZ1013-03	3/8" X 1" BOLT	2
63	GZ1009-03	1/2" X 1 1/4" BOLT	2
64	GZ10006	1/2" X 2" BUTTON BOLT	2
65	GZ1012-16	5/16" X 5/8" BUTTON BOLT	4
66	GZ1013-14	1/4" X 3/8" BOLT	2
67	013300	#8 X 3/4" SELF-TAPPING SCREW	2
68	GZ1599	3/8" X 3/4" YELLOW BUTTON BOLT	1
69	GZ1152	3/8" X 1" BUTTON BOLT	6
70	GZ1012-07	3/8" X 1/2" BUTTON BOLT	14
71	GZ1673	5/16" SET SCREW	4
72	192770	1/4" X 3/4" BOLT	6
73	GZ1761	#10 SET SCREW	8
74	GZ1021-01	RIVET	12
75	GZ0180	BUNGEE	1
76	014063	1/4" WASHER	2
77	GZ1018-04	1/2" SNAP RING	4
78	GZ1018-07	1" SNAP RING	4
79	GZ1052	1" NYLON WASHER	4
80	GZ1085	5/8" LOCK WASHER	4
81	GZ1419	1" STAR WASHER	1
82	GZ1431	1" WASHER	1
83	GZ1110	1/2" NYLON WASHER	4
84	GZ1735	1/4" CAGE NUT	6
85	GZ1007	3/8" NUT	13
86	GZ1430	1/4" WINGNUT	2
87	GZ1418	1" NUT	1
88	GZ1083	3/8" FINE-THREAD NUT	3
89	GZ1084	5/8" NUT	4
90	GZ1504	FRAME TRIM	1
91	133945	3/8" JAM NUT	2
92	174796	1/4" X 1" BUTTON SCREW	2
93	GZ1865	3/8" SHOULDER BOLT	4
94	GZ1069	3/8" SERRATED WASHER	7
95	GZ30786	5/16" ROD	1
96	GZ1742	LARGE PLUG	1
97	CC1007	3/8" NYLON WASHER	4
98	012082	5/16" NUT	4
99	GZ5124-13	SEAT COVER	1
100	GZ1404	ROLL PIN	1
101	130965	1/2" NYLON WASHER	2
		NON-ILLUSTRATED PARTS	
		WHAT PART IS NEEDED?	
#	GZ7571	OWNERS MANUAL	1
#	GZ7571FR	OWNERS MANUAL	1
#	GZ7571G	OWNERS MANUAL	1
#	GZ7571T	OWNERS MANUAL	1
#	GZ7571SP	OWNERS MANUAL	1
		WHAT PART IS NEEDED?	
#	GZ7003	DECAL,WARNING,EXT,1-10.PT	1
#	GZ7003FR	DECAL,10-POUND WARNING	1
#	GZ7003G	DECAL,10-POUND WARNING	1
#	GZ7003IT	DECAL,10-POUND WARNING	1
#	GZ7003SP	DECAL,10-POUND WARNING	1
		WHAT PART IS NEEDED?	
#	GZ7026	DECAL,SELECTOR,PIN,INSERT	1
#	GZ7026FR	DECAL, PIN INSERT CAUTION	1
#	GZ7026G	DECAL, PIN INSERT CAUTION	1

#	GZ7026IT	DECAL, PIN INSERT CAUTION	1
#	GZ7026SP	DECAL, PIN INSERT CAUTION	1
		WHAT PART IS NEEDED?	
#	GZ7005	DECAL,CAUTION,MOVING PARTS	1
#	GZ7005FR	DCL, MOVING PARTS CAUTION	1
#	GZ7005G	DCL, MOVING PARTS CAUTION	1
#	GZ7005IT	DCL, MOVING PARTS CAUTION	1
#	GZ7005SP	DCL, MOVING PARTS CAUTION	1
#	GZ7456	DECAL,ADJUSTMENT,SEATED-ROW	1
#	GZ7457	DECAL,SEATED-ROW	1
#	GZ7445	DECAL,INST,SEATED-ROW	1
#	GZ7446	DECAL,MUSCLE,SEATED-ROW	1
#	208843	DECAL,ADJ,SEAT,RT	1
#	208844	DECAL,ADJ,SEAT,LT	2
#	208845	DECAL,IND,SEAT,RT	2
#	139315	DECAL,BLANK,THERMAL	1
#	GZ7301	DECAL,FM,BLK,PMS200C,8"	1
#	GZ7302	DECAL,"M",LOGO	1
#	GZ7303	DECAL,FM,BLK/PMS200C,14"	2
#	157916	DECAL,BACKER,NMPLT	1
#	GZ7462-11	DECAL,WT,10-140,160-240	1

EXPLODED DRAWING A—Model No. GZFI8176.1

R0208A



EXPLODED DRAWING B—Model No. GZFI8176.1

R0208A

